

1.37<sup>m</sup><sub>h</sub>  
11.8<sub>v</sub>  
03:27:12<sup>P</sup><sub>M</sub>

20  
40  
60  
80  
100  
111

20  
40  
60  
80  
100  
111

# Winter Jigging

How to catch Striped Bass in deep water

GT54UHD  
CHIRP



GT54UHD  
CHIRP 840 kHz

Back

Nav Info

Home

Mark

Menu

GARMIN



Triangle Jig Head by Swamp Monkey



Presenter's favorite – Silver Rainbow



Sneaky good combo – GLOW!!!!!!



Bowed Up Jig Head



Beechwood West

Martin

Bull Dog

Lakeview Estates

Long Island

Stony Creek

Sunburst Point

Smith Mountain Lake

Point Chell

Lakemount

Paradise Point

Cape Carlyn

The Overlock

Starwood

Smith Mountain Lake

Indian Run

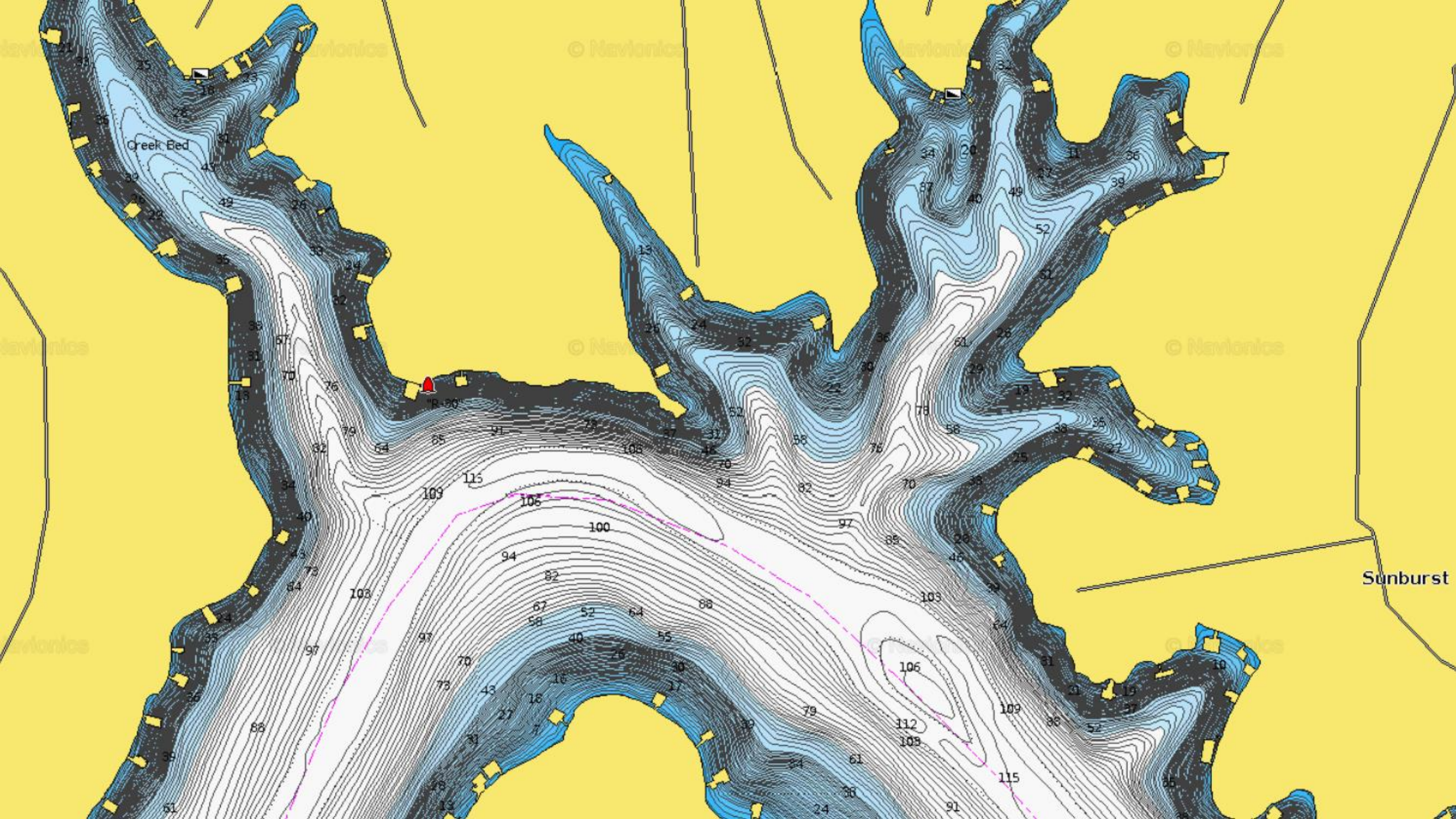
Hales Point

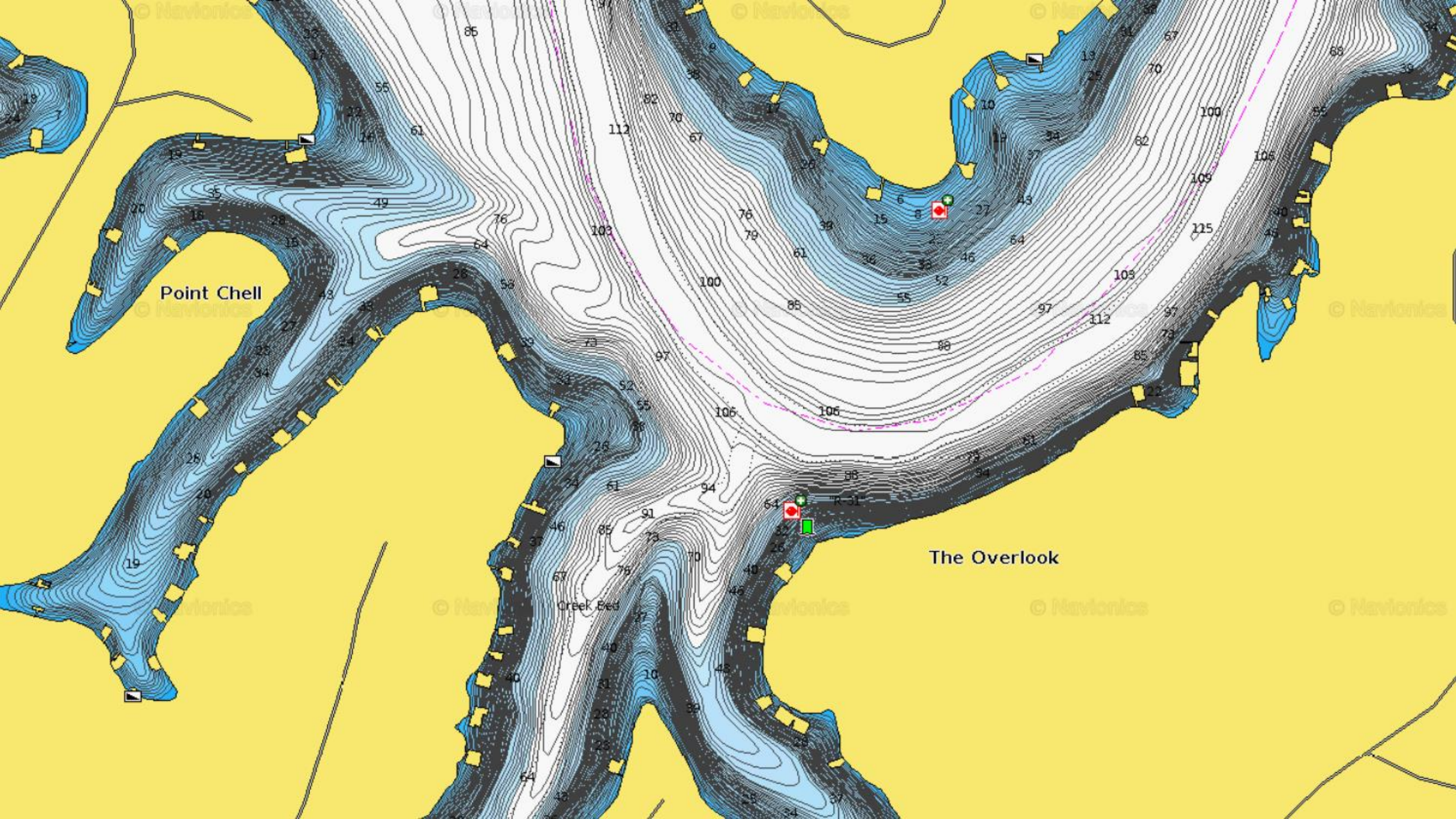
Kaseys

P

F

130



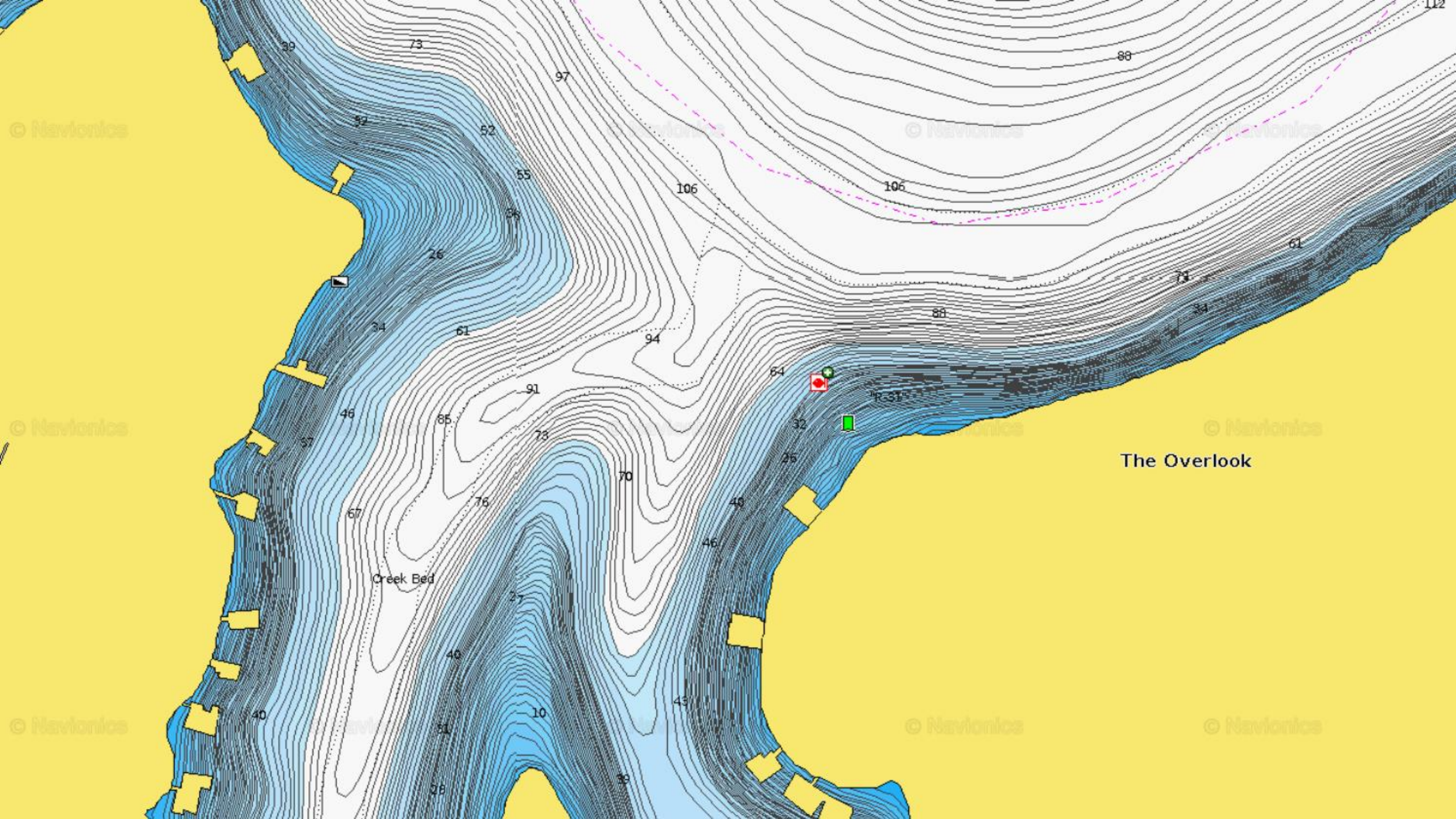


Point Chell

The Overlook

Creek Bed





The Overlook

Creek Bed

© Navionics

© Navionics

© Navionics

© Navionics

© Navionics

© Navionics

© Navionics

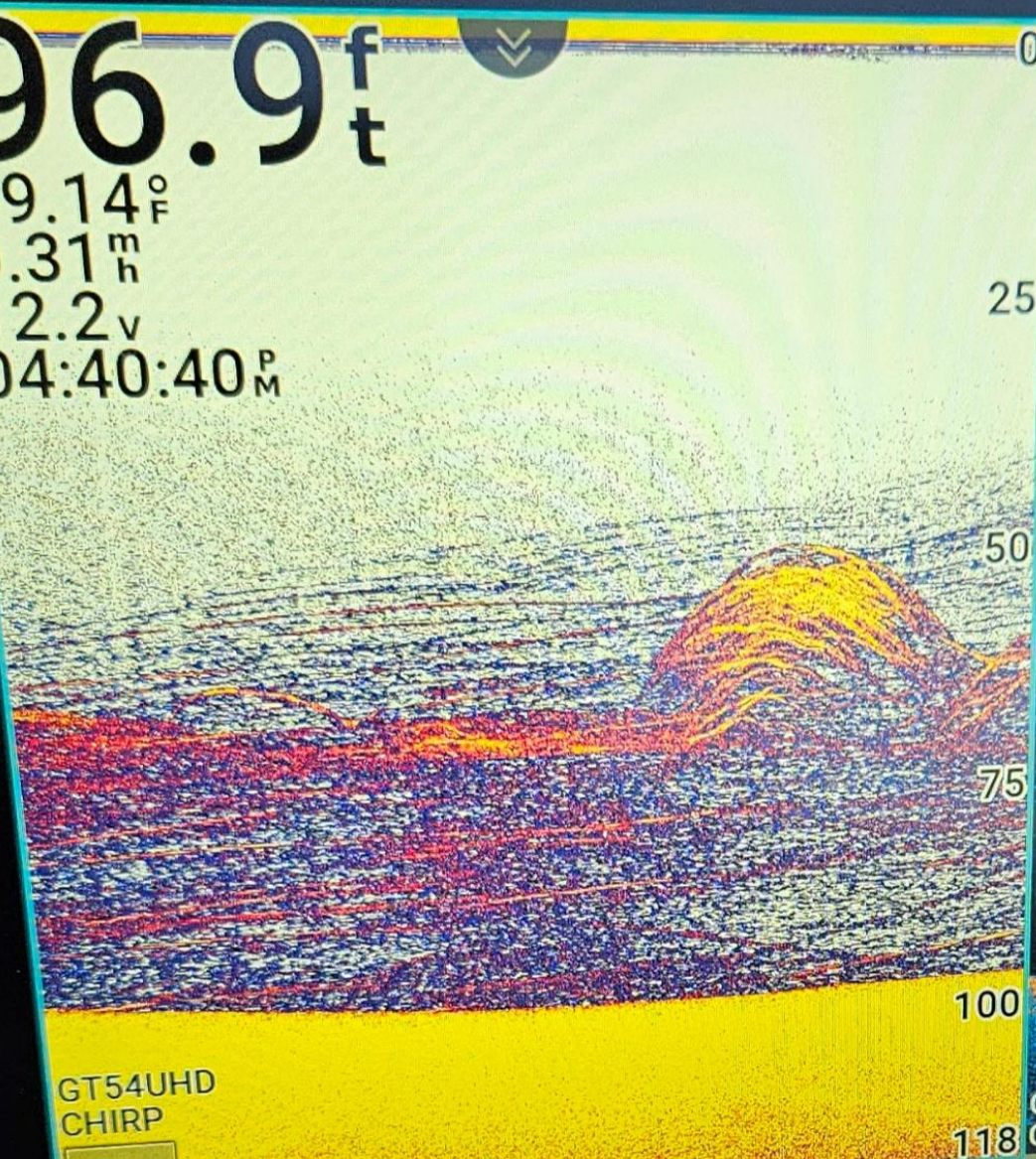
96.9 ft

49.14°F

0.31 m

12.2 v

04:40:40 PM



GT54UHD  
CHIRP



GT54UHD  
CHIRP 840 kHz

Back

Nav Info

Home

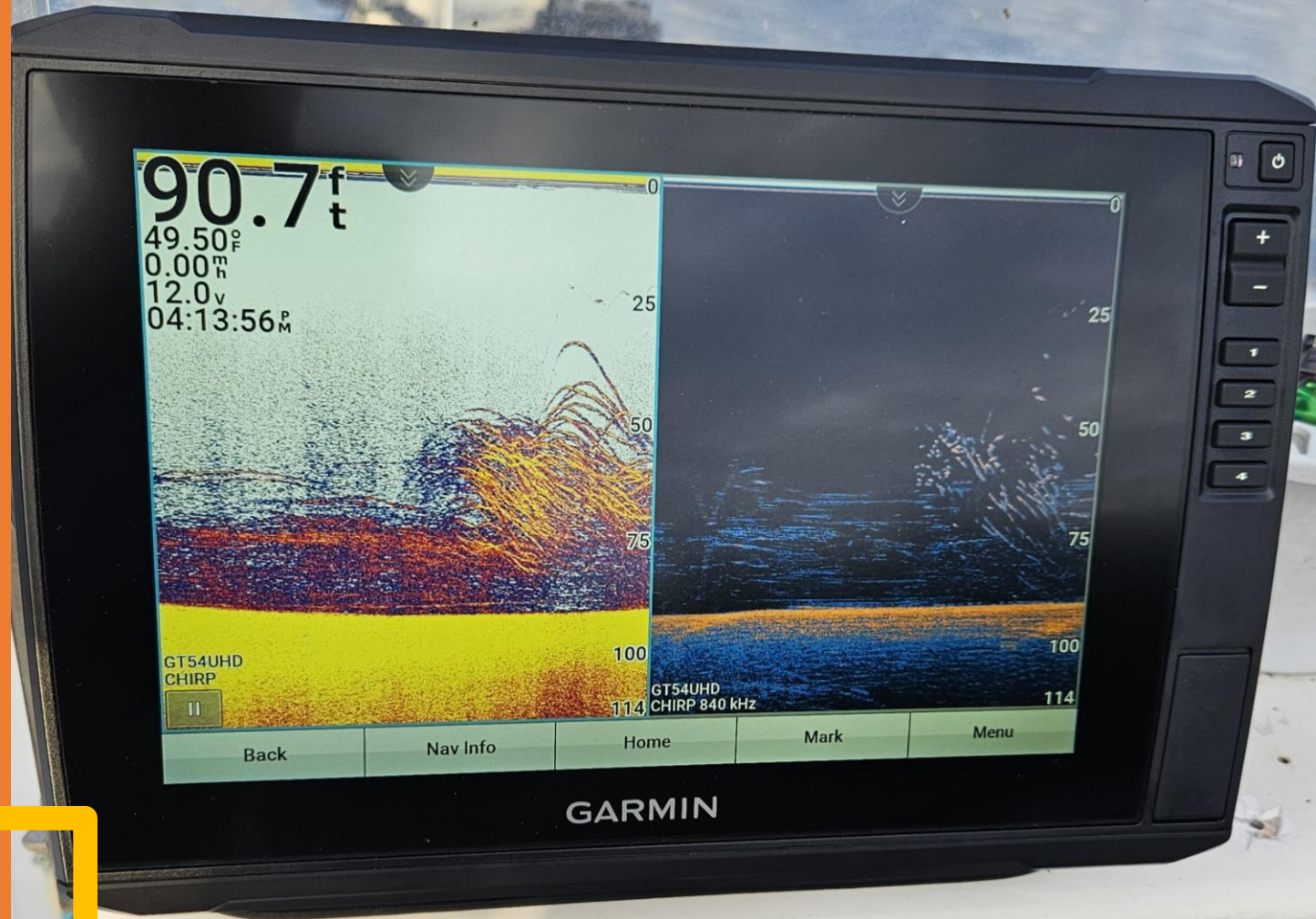
Mark

Menu

GARMIN



# Jigging Heaven



CAROLINA SKIFF





Success

91.7<sup>f</sup><sub>t</sub>

49.43<sup>°</sup><sub>F</sub>

0.47<sup>m</sup><sub>h</sub>

12.0<sub>v</sub>

04:30:49<sup>P</sup><sub>M</sub>

GT54UHD  
CHIRP



100

116

GT54UHD  
CHIRP 840 kHz

100

116

Back

Nav Info

Home

Mark

Menu

GARMIN

+

-

1

2

3

4

# SML Distinguished Resident

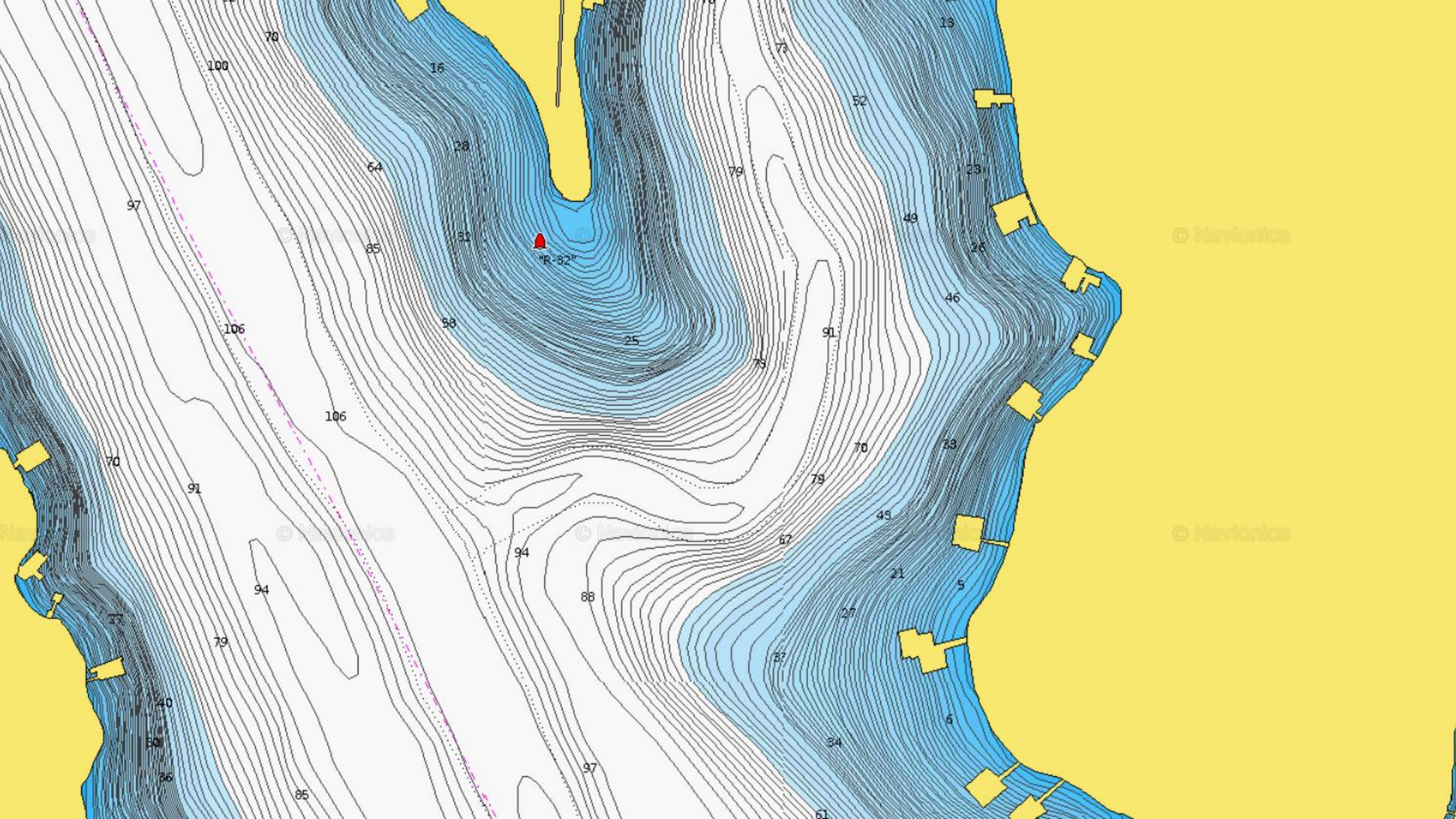
---

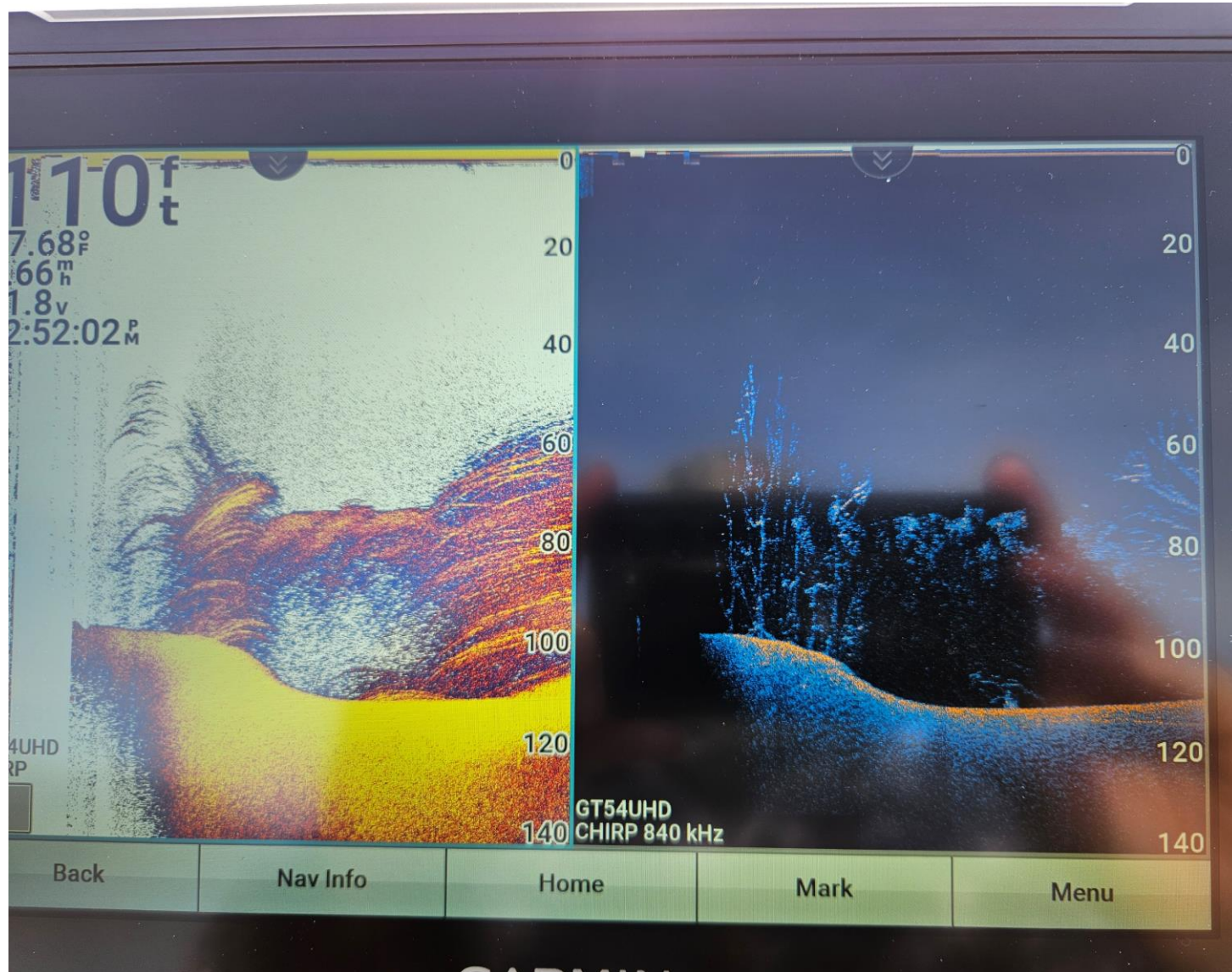


No love

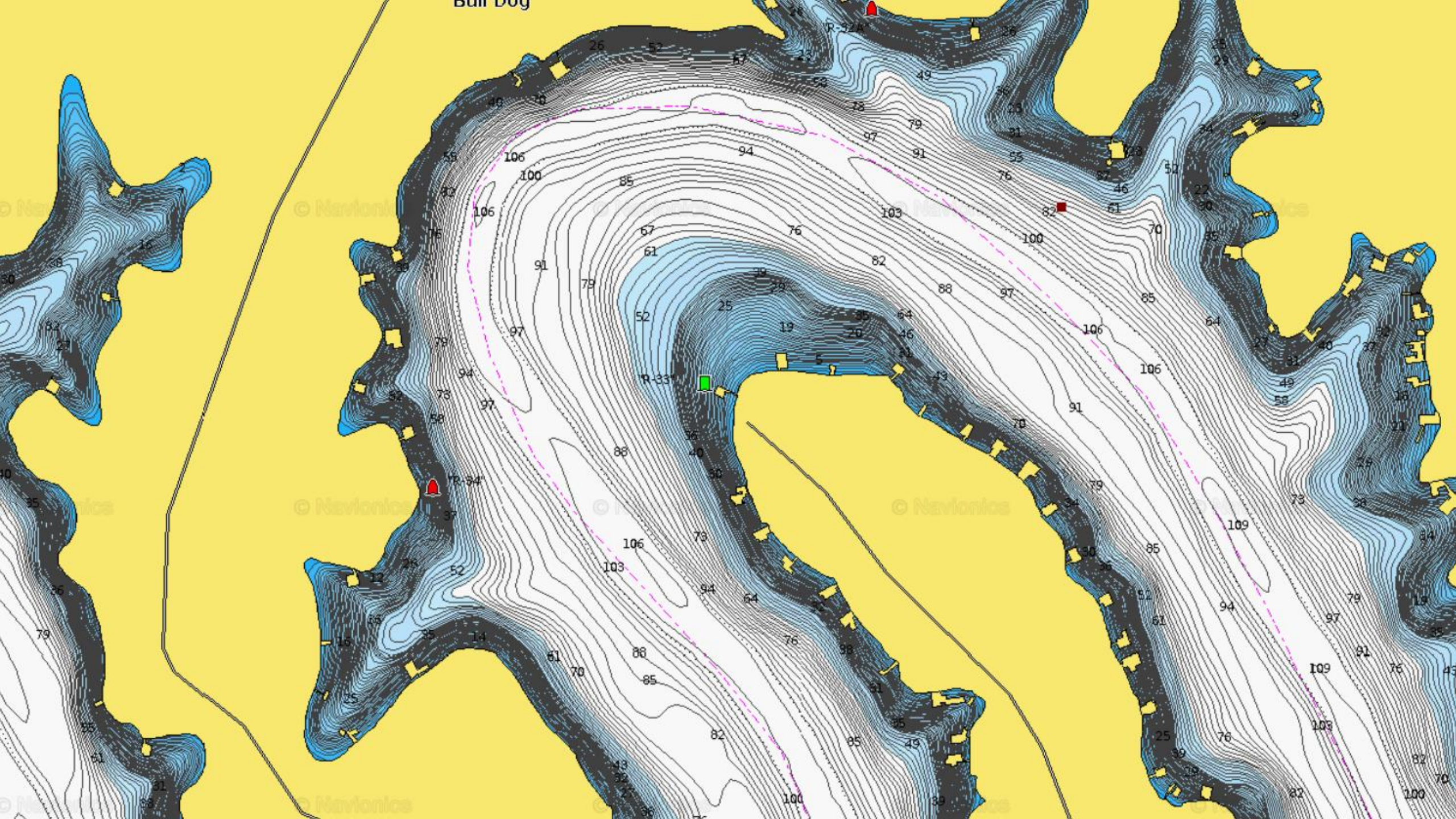






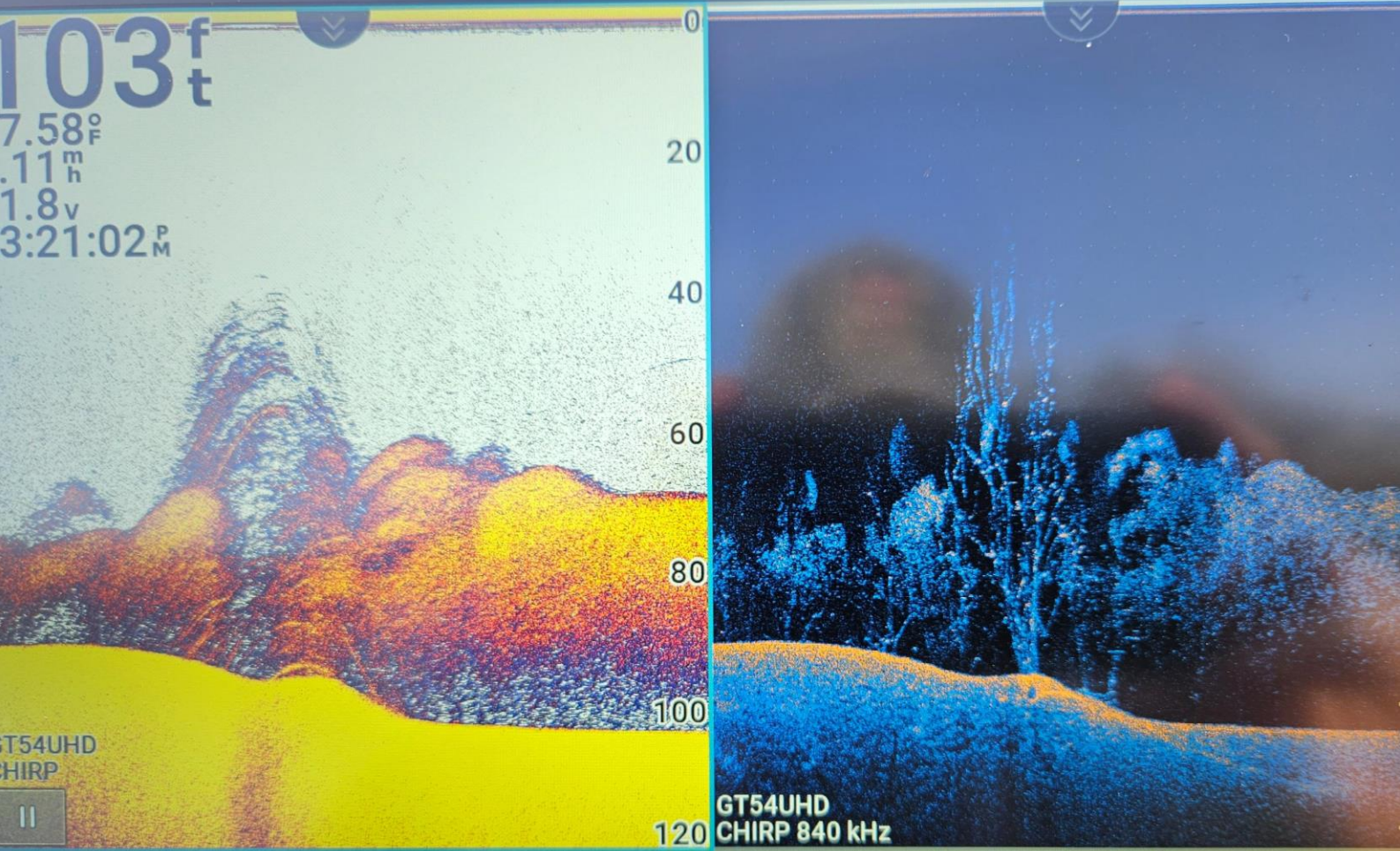


Trees  
Bait  
Riverbank



103ft

7.58°F  
.11m  
1.8v  
3:21:02P



GT54UHD  
CHIRP

GT54UHD  
CHIRP 840 kHz

Back Nav Info Home Mark Menu

GARMIN



Bait Problem?